

# natural colour creations

COLOUR CHART



**FINOMIX**<sup>®</sup>  
DRY MORTARS



**NATURAL COLOURS** pigments are consisted of high quality natural, inorganic pigments, absolutely safe for the applicator and the environment. They are consisted of 10 colour bases which are easily combined creating innumerable colour shades and thus enabling you to express your very personal style.

You can create surfaces of unique aesthetics and durability with decorative render SD 60 RETRO, microcement mortars SD 70 DÉCOR, SD 80 DÉCOR•FLEX and SD 90 DÉCOR•MICRO FLEX, as well as with other **FINOMIX** products, since **NATURAL COLOURS** can colour all cementitious mortars.

**NATURAL COLOUR CREATIONS** colour chart by **FINOMIX**, includes 120 carefully selected shades that result from the combination of one or more of the 10 colour bases with a bag of microcement mortar or any other white **FINOMIX** dry mortar.



## natural colours



### DOSAGE

The 10 colour bases are supplied in 50gr plastic containers. The capital letters declare each of the 10 bases. The numbers following, declare the quantity of plastic containers that should be mixed with a bag of white dry mortar in order to produce the selected shade.

It is strongly advised to first disperse the pigments in water and afterwards mix them with the dry product to be coloured.



B: black, C: ceramic-red, LB: light brown, DB: dark brown, RB: red-brown, OR: orange, G: green, U: blue, OC: ocre, W: white

6



RB4-DB1

7



LB4-C1

8



OR4-LB1

9

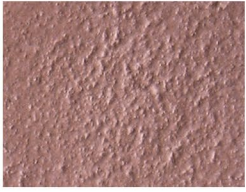


OC6-OR3

10



OC4-DB1



RB4-LB1



LB4



OR4-C1



OC5-OR1



OC4-B1



RB4-OR1



LB3



OR4-OC1



OC4-LB1



OC4-U1



RB2-LB2-C2



LB2



OR4



OC4



OC2-B1



RB1-LB1-C1



LB1



OR3



OC3



OC1-B1



RB2-OC1



LB2-OC1



OC1-OR2



OC2



OC2-U1



DB1-OC2



LB1-OC1



OR2



OC1



OR1-G2



B1-OR4



LB1-OC2



OR1



OR1-G1



OC1-U1

11



G2-B1

12



U2-OC1

13



U1

14



C4-DB1

15



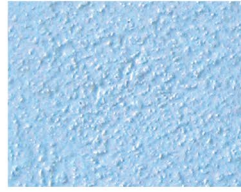
C4



G4-OC1



G1-B1



U2



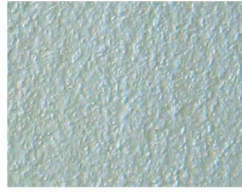
U1-C2



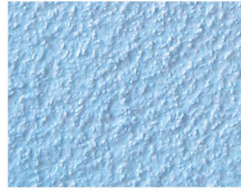
C3



G4



U1-G1



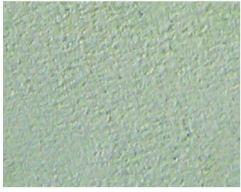
U3



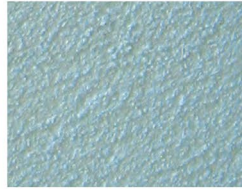
U1-C1



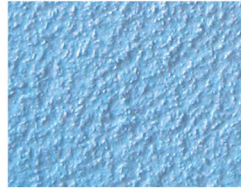
C2



G3



U2-G1



U4



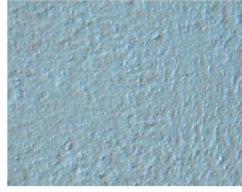
U2-C2



C1



G2



U3-G1



U4-B1



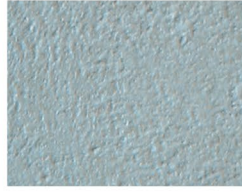
U3-C3



C1-LB1



G1



U4-OC1



U1-B2



U3-C1



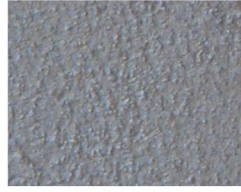
C2-OR1



G2-OC1



B3-G1



U1-B4



U2-C1



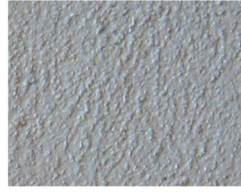
C4-OR1



G1-OC1



B2-OC1



G1-B2

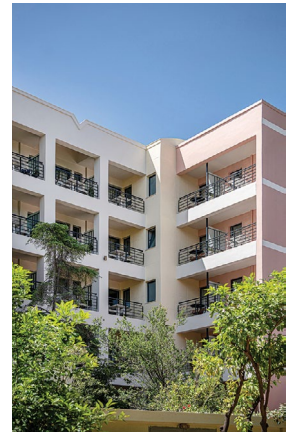


U1-B1



C4-LB1

Rendering of colours in the chart is only indicative.



**FINOBETON S.A. Head Office:** 16 Pithagora Str., 73134 Chania, Crete, Greece, tel. +3028210 27000  
**Chania Distribution Center:** Chordaki, Chania, Greece, tel. +3028214 40500  
**Herakleion Distribution Center:** 150 Irinis & Filias Ave., Malades Industrial Park, Herakleion, Greece, tel. +302810 545580  
**Athens Distribution Center:** 40, 28th Oktovriou Str., 18233 Ag. I. Rentis, Athens, Greece, tel. +30210 4915140  
[info@finomix.gr](mailto:info@finomix.gr) ■ [www.finomix.gr](http://www.finomix.gr)